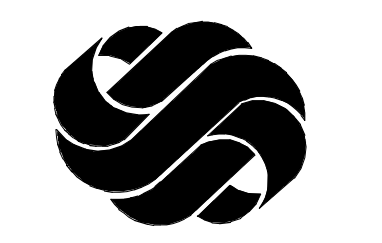


Drawn By: Author  
 Checked By: Checker  
 Approved By: Approver



GS&P

Design Services  
 For The Built  
 Environment

Atlanta GA Knoxville TN  
 Birmingham AL Louisville KY  
 Cincinnati OH Memphis TN  
 Columbus OH Nashville TN  
 Dallas TX Richmond VA  
 Ft Lauderdale FL Tallahassee FL  
 Jackson MS Tampa FL  
 Jacksonville FL

GRESHAM SMITH AND PARTNERS



Changing Health Care for Good!

Surgery Expansion  
 & Addition

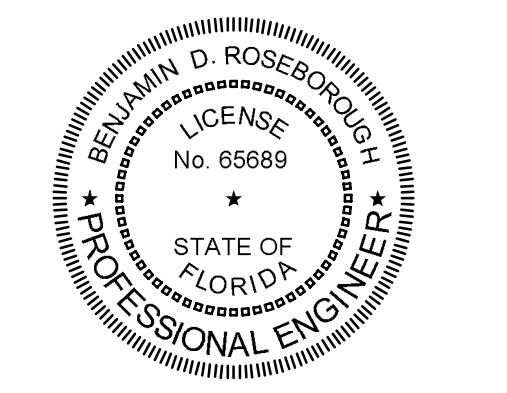
Baptist Medical  
 Center Beaches

Baptist C + A # 4574  
 1350 13th Avenue South  
 Jacksonville Beach, FL 32250

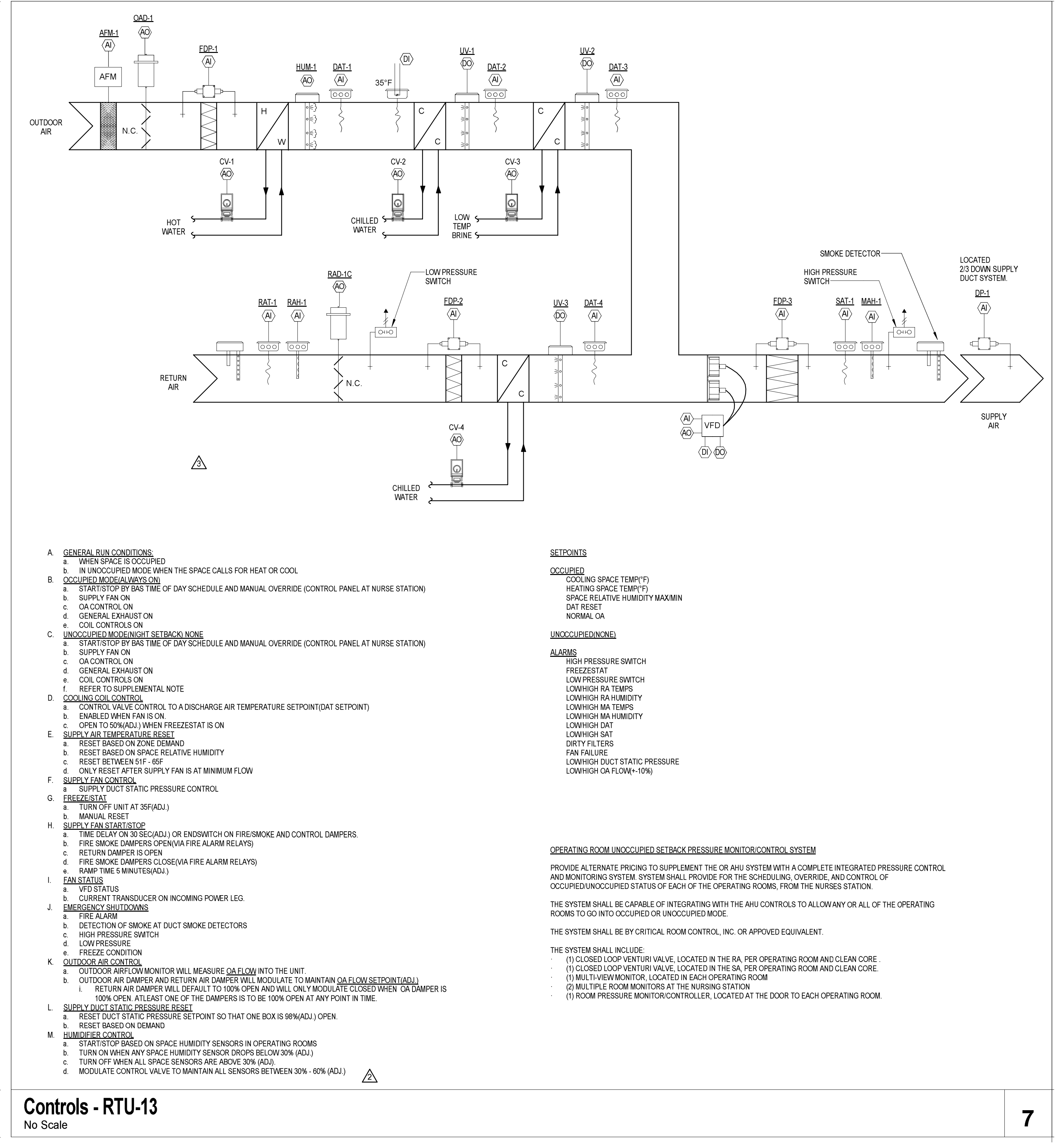
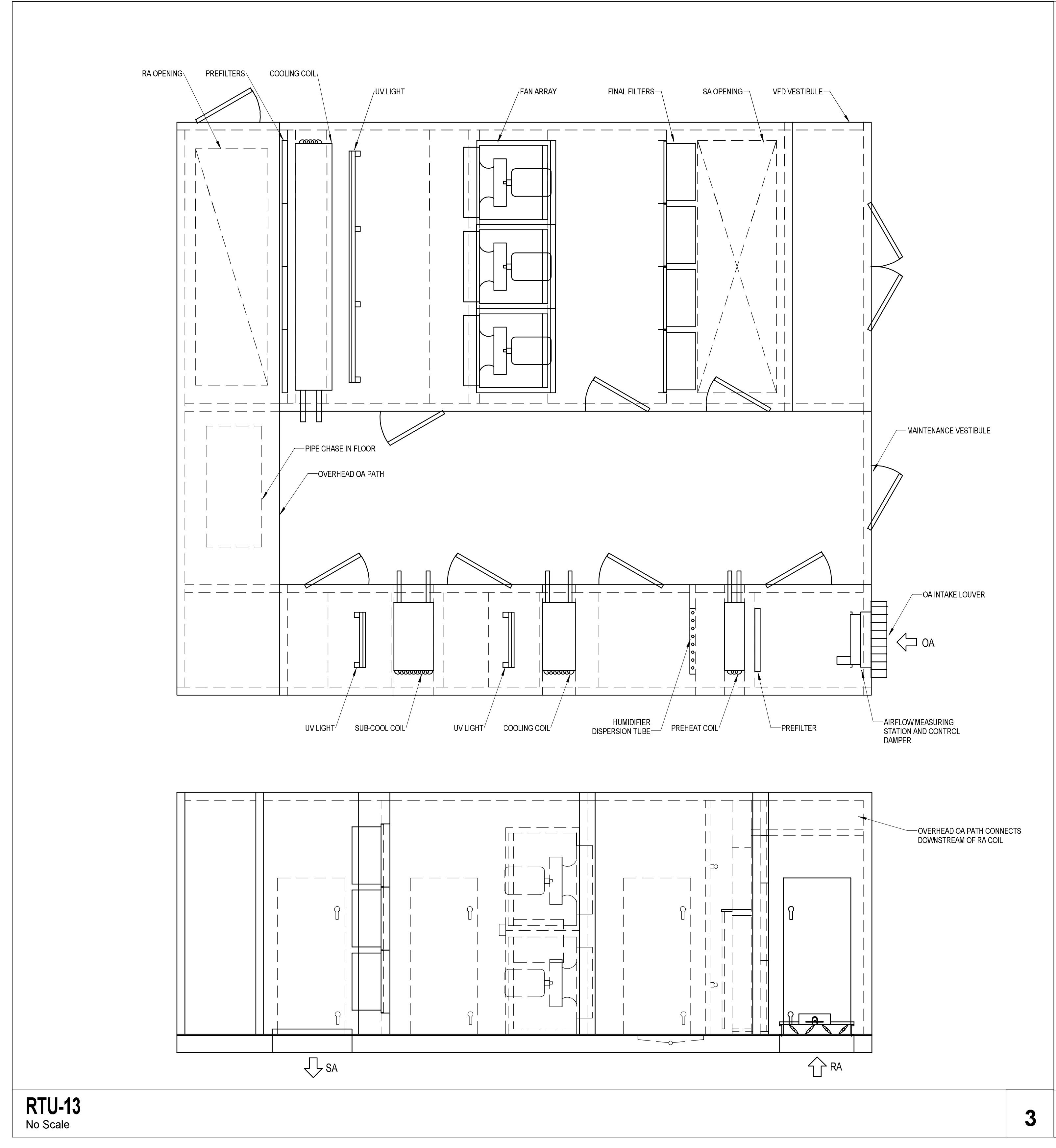
CONSTRUCTION DOCUMENTS



ISSUE FOR CONSTRUCTION



Benjamin D. Roseborough, P.E.  
 Florida License # 65689



### NEW AIR HANDLING UNIT SCHEDULE

MARK	MANUF.	MODEL	LOCATION	SERVICE	AIRFLOW (CFM)				ESP (IN. W.G.)	QTY	FAN DATA				COIL DATA				FILTER DATA																									
					SUPPLY	MIN	MAX	OA			EACH	TOTAL	VFD	VOLTS	PHASE	DESCRIPTION	EAT (°F)	LAT (°F)	ROWS	FPI	APD (IN. W.G.)	TOTAL	SENSIBLE	FLUID TYPE	EWV (°F)	LWV (°F)	GPM	WPD (FT)	EFFICIENCY	INITIAL APD (IN. W.G.)	DIRTY APD (IN. W.G.)	FACE VELOCITY (FPM)	EFFICIENCY	INITIAL APD (IN. W.G.)	DIRTY APD (IN. W.G.)	FACE VELOCITY (FPM)								
RTU-13	TEMTRON	ITF	NEW ROOF	OR	20,250	11,050	3,585	3,585	3	6	7.5	45	Y	480	3																													
					MAX	MIN	MAX																																					
					18,435	18,435	5,750	5,750																																				
					PAQ/PER/OP																																							
RTU-14	TEMTRON	ITF	NEW ROOF	PAQ/PER/OP	18,435	18,435	5,750	5,750	3	6	7.5	45	Y	480	3																													

**NOTES:**

- SEE SPECIFICATIONS FOR APPROVED MANUFACTURERS AND ADDITIONAL REQUIREMENTS
- PERFORMANCE CAPACITIES SHOWN ARE MINIMUM
- COIL AIR AND WATER PRESSURE DROPS SHOWN ARE MAXIMUM
- EACH AHU SHALL HAVE DUAL REDUNDANT VFDs TO DRIVE ALL FANS IN ARRAY
- PROVIDE STAINLESS STEEL DRAIN PANS AND COIL CASINGS; PROVIDE DRAIN PANS BELOW COOLING COILS
- PROVIDE PREMIUM EFFICIENCY FAN MOTORS; FANS SHALL BE DIRECT DRIVE PLENUM FANS
- PROVIDE BAKED ON COATING FOR ALL COILS WHICH CONTACT UNTREATED OUTSIDE AIR; PROVIDE WARRANTY FROM DATE OF SUBSTANTIAL COMPLETION
- PROVIDE FACTORY-MOUNTED NORTEC SAM-4 SHORT ABSORPTION DISTRIBUTION MANIFOLD IN OA AIRSTREAM (RTU-13 ONLY)
- FILTERS SHALL BE 24" x 24" PROVIDE EXTRA SET OF CLEAN FILTERS TO BE INSTALLED UPON PROJECT COMPLETION
- PROVIDE CORROSION RESISTANT ALUMINUM OR STAINLESS STEEL DAMPERS WITH TIGHT SHUTOFF IN OUTSIDE AIRSTREAM. TAMCO 9000 OR APPROVED EQUIVALENT.
- LARGER UNITS MAY HAVE SPLIT COILS. SCHEDULED CAPACITIES ARE BASED ON TOTAL OF ALL SPLITS. REFER TO AHU SECTIONS OR DETAILS.
- PROVIDE #4 PHOTOCELL PRESSURE GAUGES ON FILTERS AND COILS WITH ADJUSTABLE FLAGS AND COLORED BACKGROUND.
- FILTER EFFICIENCY BASED ON ASHRAE STANDARD 52 TEST METHOD
- PROVIDE BACKDRAFT DAMPERS AT EACH FAN INLET
- UPON ACTIVATION OF FIRE ALARM, UNITS SHALL BE SHUT DOWN AND ASSOCIATED FIRE/SMOKE DAMPERS CLOSE.
- ALL DOORS MUST OPEN AGAINST PRESSURE.
- SUPPLY, RETURN AND EXHAUST FAN SHALL STOP THROUGH HARD WIRE INTERLOCK UPON ACTIVATION OF SMOKE DETECTOR

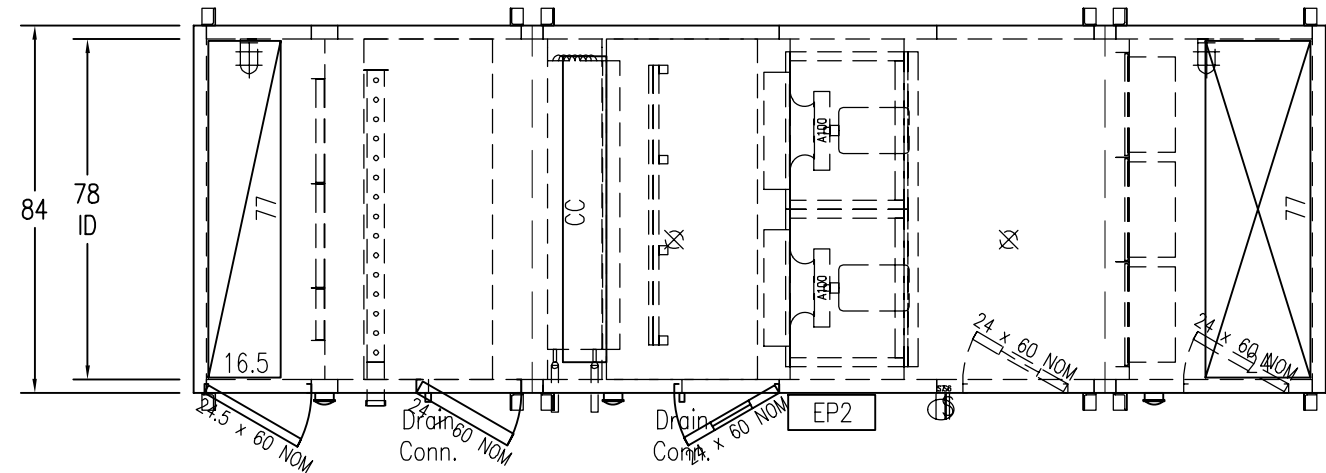
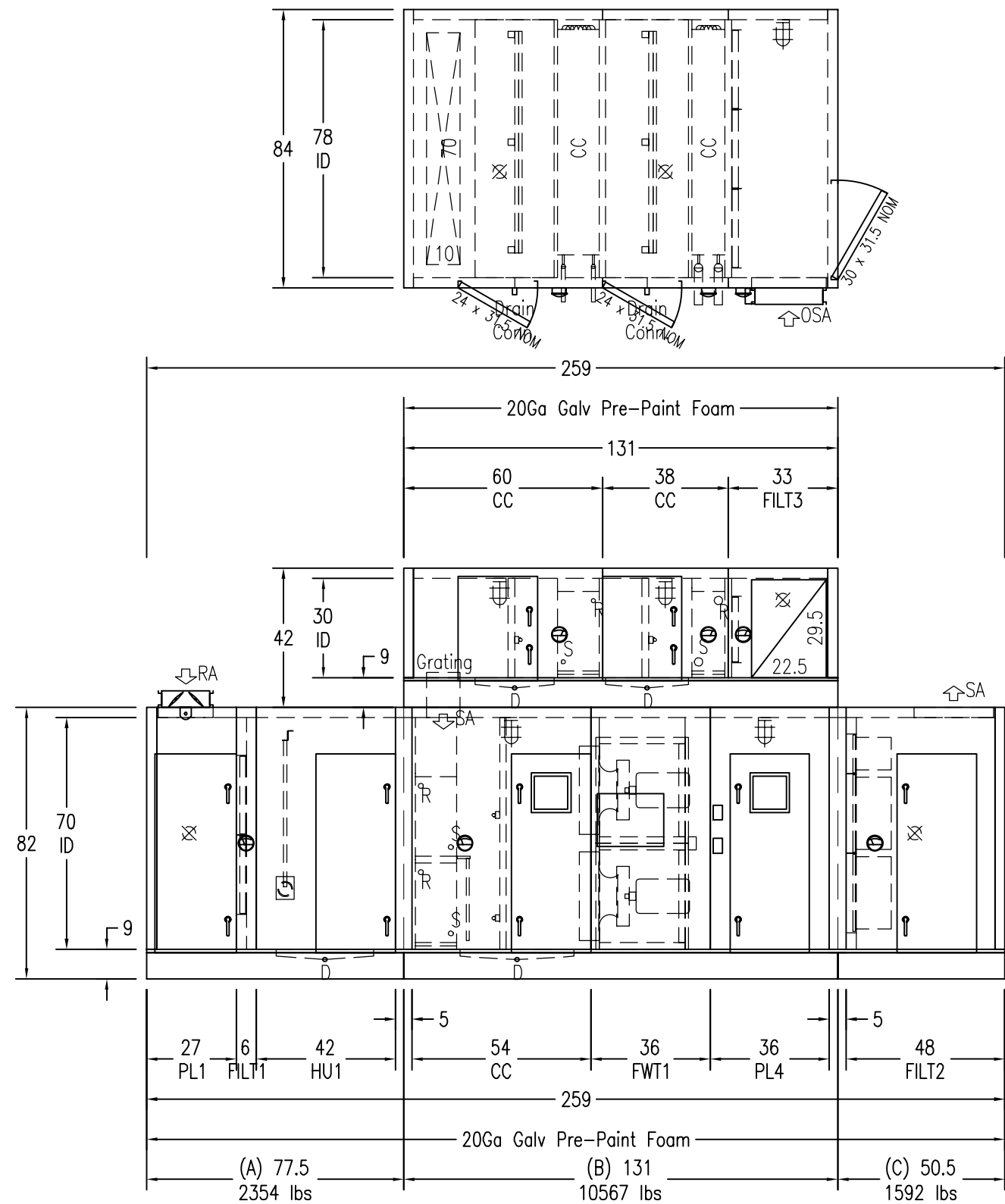
C:\Revit\2016 Local Models\1607 MEP\_RLG\_Michael.Heron.rvt  
 11/2/2018 7:31:08 AM

MECHANICAL DETAILS

M5.04

PROJECT: 42246.00  
 DATE: 6/5/2017

CLIENT CODE/FILE NUMBER: 2310017  
 PROJECT SUBMISSION NUMBER: 112-4



All dimensions shown in inches, Operating weights shown in pounds. Overall unit dimensions do not include lifting lugs, electrical panels, pipe connections, door handles, etc.  
ITF - Integrated Frame Construction



106 N Industrial Blvd. Okarche, OK 73762  
(405) 263-7286  
www.nortekair.com

This document is confidential, copyrighted and property of Nortek Air Solutions, LLC and may not be reproduced or used in any fashion without prior written permission. To view patents and other pending U.S. or Canadian patent applications visit NortekAir.com/Patents

BMC Clay County

Unit Tag AHU-DT	Unit Type Indoor	Dwg Qty 1
Rep Firm Tom Barrow Company: Jacksonville	Weight 14,513	Box Qty 3
Rep Contact John Winslow, (904) 399-4133	Model No	
NASDA Ver 7.8.0	Factory SAE MW	Quote No
Job No	Date m/d/y 2/3/2015	Rev A